



INSTITUTE FOR COMMUNITY
PARTNERSHIPS AND SUSTAINABLE
DEVELOPMENT

ANNUAL REPORT 2019

GROWING AND THRIVING TOGETHER



DR. AFATCHAO AT THE NATIVE PLANT NURSERY IN NOTSÉ, TOGO.

Growing into 2020

2019 was a great year for ICPSD, full of change and growth. We welcomed a new executive director, new staff on the ground in Togo, a new board member, had a three-day strategic planning retreat, and have continued building partnerships aimed at better serving communities in Togo.

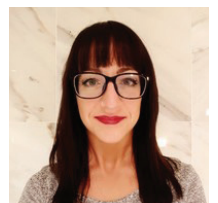
It is with great honor that I draft this message for ICPSD as the new Executive Director. But I would be remiss if I did not take a moment to acknowledge my predecessor in this role as well as co-founder of ICPSD, Dr. Romuald Afatchao (warmly known to many as Ro). I am very grateful to call him friend and mentor. Little did we know when we first met in 2010 where that meeting would take us. ICPSD would not be here today if not for Ro's passion and positive energy. I am honored to support him in his dream of raising his countrymen while building and mending bridges between those of all backgrounds and races. Reflecting on the hard work and roller coaster ride of the last 10 years, I can say without a shadow of a doubt that ICPSD is where it is today because of RO and his dream. I hope you will join me in thanking Ro for his service as Executive Director and passion to make the world a better place. He remains on the ICPSD Board of Directors as President, giving his time freely in effort to continue to steer it in a direction focused on keeping the people of Togo and Africa at the center of their own development. For this we are also grateful. I would also be remiss if I did not acknowledge the space of discomfort I inhabit taking over this position. I do not wish to be another well-meaning white person perpetuating the white savior industrial complex and subverting critical indigenous

leadership and representation. My goal in this position is to hold this place of discomfort, to continue to sit with it and to use my privilege to uplift, amplify, and support local voices and development in the African communities we serve.

In 2019, ICPSD saw continued progress and growth, including the launch of a new program previously operated in pilot stage, the Experiential Learning Program. We are very excited about the trajectory of this program. (More about that later in this report.) Our growth over the last couple of years prompted us to work with an outside consultant to not only review our current operational and programmatic undertakings, but to strategize moving forward with clarity of purpose and maximum ability. As such, we saw a refinement in our vision, mission, and values as well as revisited responsibilities for all we undertake. These lead us enthusiastically forward.

ICPSD prides itself in doing a lot with little while remaining committed to keeping communities at the center of their own development. We know that all this is possible because of support from donors and volunteers. We cannot begin to express the gratitude we feel for your support and belief in what we strive to do. We look forward to what the next decade holds and hope you will continue to join us for the journey.

Sincerely,
Whitney Schroeder



Contents

01

GROWING INTO 2020

A message from the ICPSD Executive Director.

03

ABOUT ICPSD

Revised purpose, mission and vision.

04

**ECOSYSTEM RESTORATION
PROGRAM**

Supporting health ecosystems through the utilization
of native plant species.

05

LOLONU

Duis vulputate honcus lorem Nunc gravida aliquam
felis at efficitur enim sodales quis.

06-07

**YOUTH COMMUNITY
DEVELOPMENT PROGRAM**

Supporting the personal and professional growth of
youth as leaders in their community.

08

**EXPERIENTIAL LEARNING
PROGRAM**

Facilitating opportunities for experiential learning
through cross-cultural exchange.

09-10

PARTNERSHIPS & DONORS

Partnerships and donors are the major reason ICPSD
is able to do what it does.

11-12

WAYS TO GIVE

Donor programs and a variety of ways you can take
action to support ICPSD.

13

2019 FINANCIAL REPORT

2019 in numbers.

14

THE ICPSD TEAM

The people who are committed to seeing ICPSD
succeed.

About ICPSD

ICPSD values collaborative and innovative change making. ICPSD strives to act as a facilitator for equitable partnerships at all levels of the community in Togo, such as (but not limited to) universities, non-governmental organizations, businesses, international institutions, tribal governments and all levels of city and country government. Partnerships – while focused at the local level – are not limited to the country of Togo.



*We believe people grow
and thrive together.*



MISSION

Empowering and entrusting communities to be at the center of their own development.



VISION

A vibrant and flourishing Africa in an ever-changing world.



VALUES

Collaboration
Innovation
Changemaking



Ecosystem Restoration Program

We believe communities thrive in healthy ecosystems.

The Ecosystem Restoration Program (ERP) mission is to support the reclamation, restoration, and preservation of ecosystems in Africa through the utilization of native species. Previously called the Native Plant Nursery, ICPSD decided to rename the program in order to better capture the breadth of activities being done as well as goals moving forward. The nursery is the primary platform from which ERP supports traditional agroforestry systems, reforestation and afforestation efforts, and to foster citizen science and understanding of climate change mitigation and adaptation measures.

Togo is one of the top five countries in the world for rate of deforestation, resulting in less than five percent of the land remaining forested. The ERP model focuses first on collecting local information through surveys, focus groups, in-person interviews, and document analysis in order to understand the political, social, economic, and technical dimensions of ecological restoration. Second, partnerships are built and supported between local, regional and international groups. Third, knowledge sharing is done through training and education workshops, high school science programs, volunteerism and more - efforts which are led by local and regional community members. Seventy-five local women entrepreneurs, 33 local practitioners, and 40 school students ages 14-21 have been served by training and workshops.

The biggest challenges ERP faced in 2019 were obtaining viable native plant seeds, a high percentage of non-viable seedlings for planting, low resources for education about reforestation, and building understanding and valuation of data collection.



4,055

SEEDLINGS PRODUCED
IN 2019



18,000

SEEDLINGS PRODUCED
TO DATE



6

NUMBER OF DIFFERENT
SPECIES PLANTED IN
2019



15

NUMBER OF DIFFERENT
SPECIES PLANTED TO
DATE

Lolonu



Lolonu is a women's community-based organization in Notsé, Togo. It is comprised of 75 women who participate together in cultural activities, community cleanup efforts, operate a community farm and work together to support one another.

The women are the official cultural dance group of the Ewé chieftain. When he is conducting official activities, they lead his entourage and perform traditional dances. In 2017, Lolonu won the national cultural dance competition. This has garnered them national recognition and they travel all over the country to perform.

Lolonu is officially contracted with the city of Notsé to clean up garbage throughout the city and take it to the landfill. Alongside this contract, they independently own and operate a compost production unit, which they setup near the landfill to collect and process organic material. They sell the compost they produce and are the primary source for ICPSD nursery compost.

The women also own and operate a community farm. In 2016, they partnered with the ICPSD Ecosystem Restoration Program to learn and assist with agroforestry practices. They now fully implement these at their farm site. They have also taken charge of caretaking for the ICPSD native plant nursery. In this role, Lolonu performs daily monitoring of the seedlings, collection of data, and watering. After the seedlings are planted, they clean and store containers until the next round of seedlings are started. Lolonu hosts workshops at the nursery with numerous stakeholders from across the country, teaching best practices for growing native plant species. They also lead efforts in teaching the local community about growing and planting native plants and responsible agroforestry practices.



AKOUI MAWULAWOE

VICE SECRETARY OF LOLONU

"Young people like myself grew up without knowing some of the native trees of our locality that have gone extinct. Today, because the work of ICPSD in Notse, we are learning more about those species, and we are growing some of them. In addition, we are using some of the tree species as natural sources of fertilizer in our farms. Further, I am confident I can train others in our community on the use of tree in agroforestry."



Youth Community Development Program

We believe in youth as community leaders.

YCDP PARTICIPANTS MARCHING IN LOCAL INDEPENDENCE DAY PARADE

The Youth Community Development Program (YCDP) is designed to facilitate leadership development that supports the personal and professional growth of participants. It supports local middle and high school aged students as they explore ways to build local capacity, self-reliance, and knowledge for the betterment and sustainability of their community. As a group, students elect peer leadership as well as the leadership initiatives they would like to learn about and share with the community. In 2019 YCDP saw an increase in participation from 46 participants to 50, despite the graduation of 25 seniors. There was also an increase in age diversity of the group, with participants spanning five grade levels, up from the previous two.

CURRENT YCDP ACTIVITIES

ENGLISH LANGUAGE TRAINING

PERSONAL FINANCE EDUCATION

LEADERSHIP WORKSHOPS

TRADITIONAL DANCE & CHOREOGRAPHY

TRADITIONAL STORYTELLING (GRIOT)

YOUTH SOCCER TEAM

SKITS AND POETRY

CITY CLEANING



EMILINE FAGNISSE

SOPHOMORE, NOTSÉ PUBLIC HIGH SCHOOL

“Before joining ICPSD, I was very shy and always scared to speak in public. With the leadership training and specifically training in public speaking with the ICPSD Youth Academy, I am more confident, more motivated, and very involved in a group setting.”



CHRISTOPHE ZOKOTI

SENIOR, NOTSÉ PUBLIC HIGH SCHOOL

“I was one of the first students to join the organization three years ago and I’ve gained a lot in terms of personal and academic growth ever since. I am more confident and my academic work has improved exponentially. For example, I have always enjoyed English as a language but I’ve also struggled with writing and speaking. Now, I get better grades in my English class, thanks to the English training program.”





Experiential Learning Facilitation

We believe in experiential learning as a catalyst for social change.

ICPSD is excited to announce the launch of the Experiential Learning Facilitation Program. December 2019 through January 2020 saw the first group of program participants since its official launch under this new structural focus. This program facilitates the experiential learning for participants from around the world through education and interactions, including working alongside community members on projects for the improvement of their community. All projects are prioritized by the local community members and their needs.

Mission: Facilitating opportunities for experiential learning through cross-cultural exchange.

Strategic Areas of Focus:

1. Facilitating experiential learning that promotes the safety, dignity, and humanity of local communities in Africa.
2. Cultivate international and local partnerships.
3. Develop and grow a programmatic infrastructure that challenges the status quo of international service-learning experiences.



Partnerships



Entreprises, Territoires et Développement (ETD)

ETD contributes to the sustainable social and economic development of populations living in rural areas by valuing and preserving human and natural resources while preserving the environment.



Center for Forest Nursery and Seedling Research (CFNSR)

The Center for Forest Nursery and Seedling Research mission focuses on native plant regeneration. We teach students and professionals, conduct relevant research, and serve the native plant industry by sharing information and producing high-quality nursery stock.



Terroirs et Tropiques

Terroirs et Tropiques offers training, project management and expertise services for projects and programs in Africa and Madagascar. It emphasizes linkage and partnership as the basis for all development, solidarity and cooperation.



Style Her Empowered

Style Her Empowered (SHE) is a nonprofit organization that improves access to education for girls in Togo, Africa by teaching girls to sew their own school uniforms and providing them with tuition assistance.



TerraGraphics International Foundation

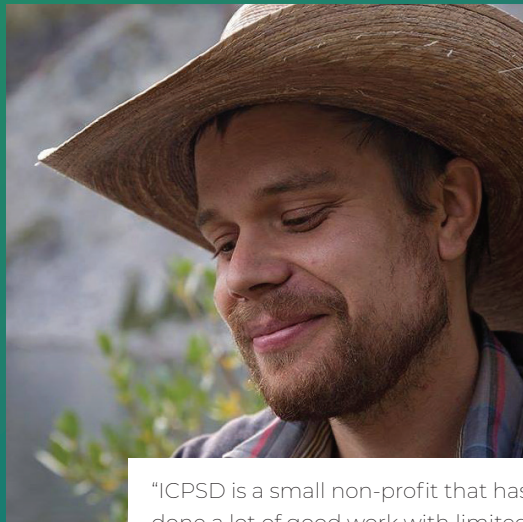
TerraGraphics International Foundation (TIFO) works with communities to reduce human health risks associated with environmental contaminants.



Belle Porte

Belle Porte is a Togolese nonprofit out of Notsé that addresses community needs in health, education, professional training, human rights, the environment, people with disabilities, women and children rights.

Donor Highlights



"ICPSD is a small non-profit that has done a lot of good work with limited resources. Whether that is with the Togo Nursery Project or helping other NGO's like Style Her Empowered find their legs."

Matthew Davis

Albany, OR

Matthew Davis works for the University of Oregon and enjoys farming walnuts and flowers in his free time. He first learned about ICPSD through his friends at the University of Idaho. He was interested in ICPSD's forest restoration and native plant propagation efforts in Togo. Matthew was a huge help in the planning and implementation of a fundraiser ICPSD and CFNSR hosted to raise money for the native plant nursery. He would like to see the native plant nursery model taken up by other communities in the region.

Matthew says he is a sustaining donor because, "A forest doesn't grow in a year, it takes a longer term commitment. Similarly, our efforts to empower local communities to reforest their landscape is going to require sustained and long term interest. I just play a small part really, with my monthly contribution."

Thank you to all of our 2019 donors!

Donations are what make ICPSD's support for local communities in Africa possible. ICPSD is so grateful to those who have lent support. With the advent of things like Facebook fundraising and giving through Amazon, access is not always possible to the names of people who have supported ICPSD. If you donated through one of these sources and feel comfortable being included, please contact Whitney at whitney.schroeder@icpsdafrica.org.

Sara Nelson

Matthew Davis

Nancy Glazier

Ro Afatchao

Laurie Wesseling

Samantha Giacobozzi

Whitney Schroeder

Ian von Lindern & Margrit von Braun

Adrienne Schroeder

Jenni Chaffin

Casey Bartrem

Kyle Howerton

Jeremy Bennett

Amy McMurtry

Vanessa Hester

Jill Johnson

ICPSD would like to offer additional acknowledgement to **Dr. Andrew Nelson**. Dr. Nelson oversees the Center for Forest Nursery and Seedling Research at the University of Idaho. In that role he has led numerous collaborations with ICPSD in establishing and maintaining the native plant nursery. Outside of that role he has dedicated countless hours and personal funds in support of the nursery and ICPSD.

The Forest



JOIN THE FOREST

The Forest is a group of monthly givers committed to fighting climate change and building community by improving the health and quality of the environment.

It's about supporting people in their own development

Monthly contributions as a member of The Forest not only plant trees, but support people growing and thriving together a part of the greater ecosystem.

As a member of The Forest you will:

- Actively fight climate change and deforestation
- Empower and entrust people in their own sustainable development
- Support the future

As part of the The Forest, you will not only plant trees, but will support sustaining the entire ecosystem. Learn more at www.icpsdafrica.org/take-action.



U.N. TRILLION TREE CAMPAIGN

The Trillion Tree Campaign builds on the Billion Tree Campaign launched by Wangari Maathai in 2007. Three trillion trees currently exist globally. The world has space for up to 600 billion mature trees without competing with agricultural lands. To restore these trees, we need to plant at least a trillion trees, since some will not survive. Additionally, we must protect the 170 billion trees in imminent risk of destruction. They are crucial carbon storages and essential ecosystems to protect biodiversity. A Trillion Trees could capture 25% of all human-made CO2 emissions and hereby help to keep global temperature rise below the crucial 2°C limit.

Visit www.trilliontreecampaign.org/donate-trees and search for the ICPSD Ecosystem Restoration Program to help us plant trees.

Take Action

ICPSD is a volunteer ran organization. All board members and the executive director serve without compensation. The two founders, one of whom fills the executive director role, take primary action on programming and daily operations. Donor and volunteer contributions directly contribute to all that ICPSD does. There are many ways you can take action for ICPSD. Have new ideas on how to contribute? Let us know at info@icpsdafrica.org.



ONLINE DONATIONS

We have lots of options for donations to fit you budget and preference.

www.icpsdafrica.org/take-action



SPREAD THE WORD

Help get the ICPSD name and activities out there by sharing our content on social media, telling your friends, colleagues, and family about us, volunteering and more.

www.icpsdafrica.org



AMAZON SMILE

Do your Amazon shopping on AmazonSmile. When you do, the AmazonSmile Foundation will donate 0.5% of the purchase price of eligible products to ICPSD.

<http://bit.ly/ICPSDsmile>



AMAZON CHARITY LISTS

AmazonSmile Charity Lists is a new and meaningful way for you to donate items directly to ICPSD, taking the guesswork out of giving so you can donate worry-free.

<http://bit.ly/ICPSDwishlist>



FACEBOOK

Start a Facebook fundraisers for ICPSD in celebration of a birthday, anniversary, or just because! Or donate directly from the ICPSD Facebook page with our donate button.

www.facebook.com/ICPSDAfrica/



DAF DIRECT

DAF Direct makes it easier for you to support ICPSD by giving directly from your donor-advised fund.

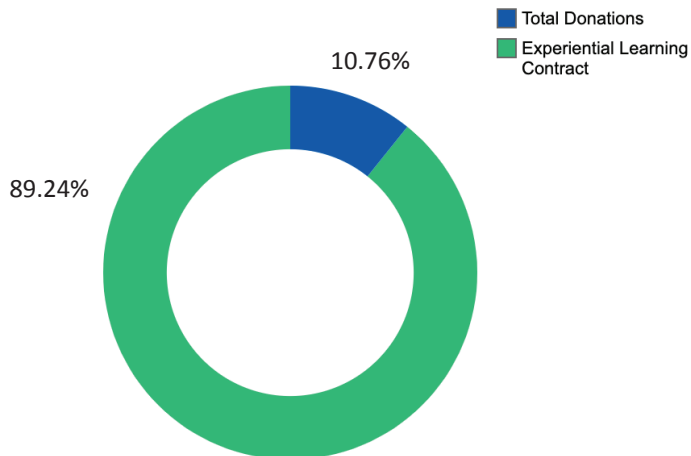
<http://bit.ly/DAFicpsd>

Financial Report

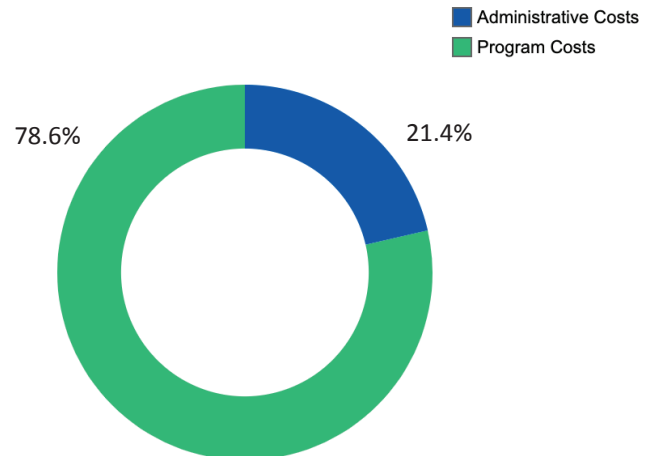
As of December 31, 2019

The year 2019 saw the highest revenue for ICPSD to date. This was primarily due to the launch of the Experiential Learning Program and the first trip contracted with the University of Idaho Alternative Service Break program. The revenue and costs for a single contract include all the expenses to house, feed and transport participants as well as costs to fund the service projects participants contribute to. All costs of that program and related projects it supported are not reflected in the 2019 financials as the contract extended into 2020 as well as some costs to fund the service projects.

2019 REVENUE



2019 EXPENDITURES



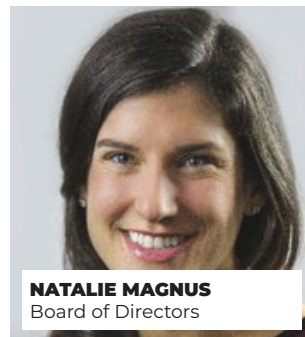
T E A M



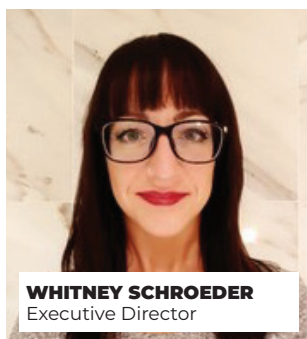
DR. ROMUALD AFATCHAO
President - Board of Directors



DR. JACKIE MAXIMILLIAN
Board of Directors



NATALIE MAGNUS
Board of Directors



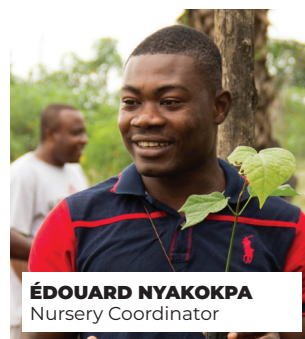
WHITNEY SCHROEDER
Executive Director



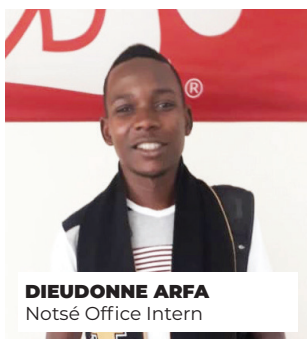
YVES AGBOGAO
Togo Financial
Administrator



FRANCOISE ADJO ODOH
Youth Program Coordinator



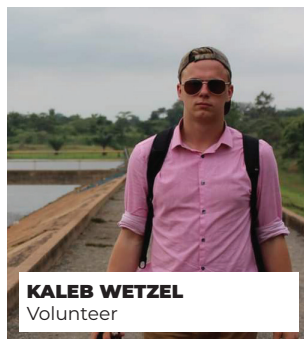
ÉDOUARD NYAKOKPA
Nursery Coordinator



DIEUDONNE ARFA
Notsé Office Intern



VINCENT RENAUD
Consultant



KALEB WETZEL
Volunteer

Contact :

Phone: +1.208.310.3508

Email: info@icpsdafrica.org

Web: www.icpsdafrica.org

Address :

121 South Jackson St.
Moscow, ID, USA

ICPSD ANNUAL REPORT 2019

INSTITUTE FOR COMMUNITY
PARTNERSHIPS AND SUSTAINABLE
DEVELOPMENT

